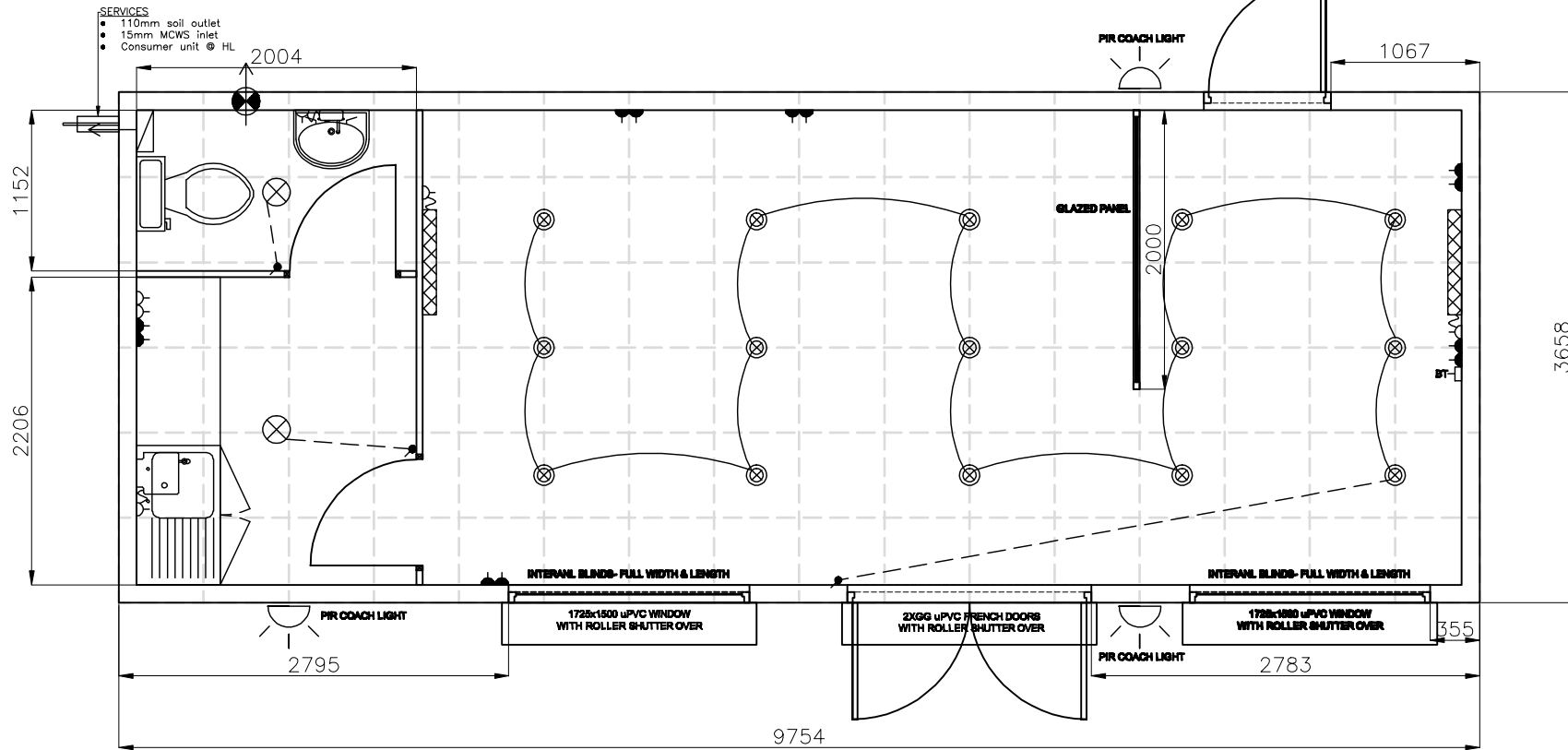
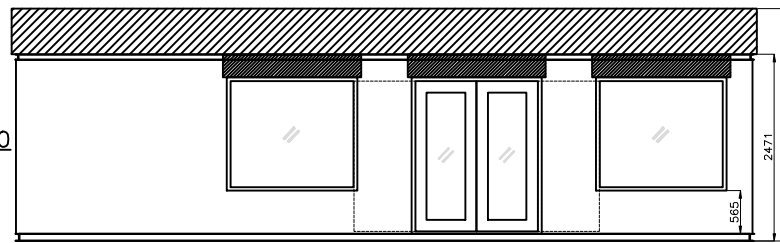


GENERAL NOTES:

- Measurements to windows and doors taken from outside edge of base.
- Flat sided steel.
- Lifting eyes.
- Finish: TBC
- LAMINATE FLOORING TO SALES AREA.

FRONT ELEVATION 1:100



KEY:	DESCRIPTION:
	Consumer unit
	TSO (high/low level), SSO or fused spur
	Single fluorescent tube light (CAT2)
	Bulkhead light
	Light switch
	2kW convection heater
	Tubular heater
	Frost protector
	Oil filled heater
	Instantaneous water heater
	Benching c/w hat & coat hooks
	WC
	Urinal
	1000mm Sink c/w base unit
	Shower cubicle
	Wash hand basin
	Hat & coat hooks
	Pinboard
	Doorset
	1000x1000 window with shutters
	660x400 high level window with mesh guard
	Overply door for future use
	15 water inlet 40 or 110 soil outlet
	Jack leg

NOTES:

- All measurements in mm unless stated within [].
- Drawing to be read in conjunction with spec sheet.
- DO NOT SCALE: IF IN DOUBT ASK.

MIDLAND PORTABLE BUILDINGS

DZ

32'x12' SALES UNIT

/	Issued for information	26.10.11					Drawn: D.GILLEN	CAD file name: DF
	Rev.	Description	Date	Scale: 1:50@A4	Date: OCT_11	Checked: .	Approved: .	Drawing No: MPB-261011-01